

# Beach Access and Use Guidelines

## Beachside Villas Nearby Beach Access

There are four great beach options near Beachside Villas:

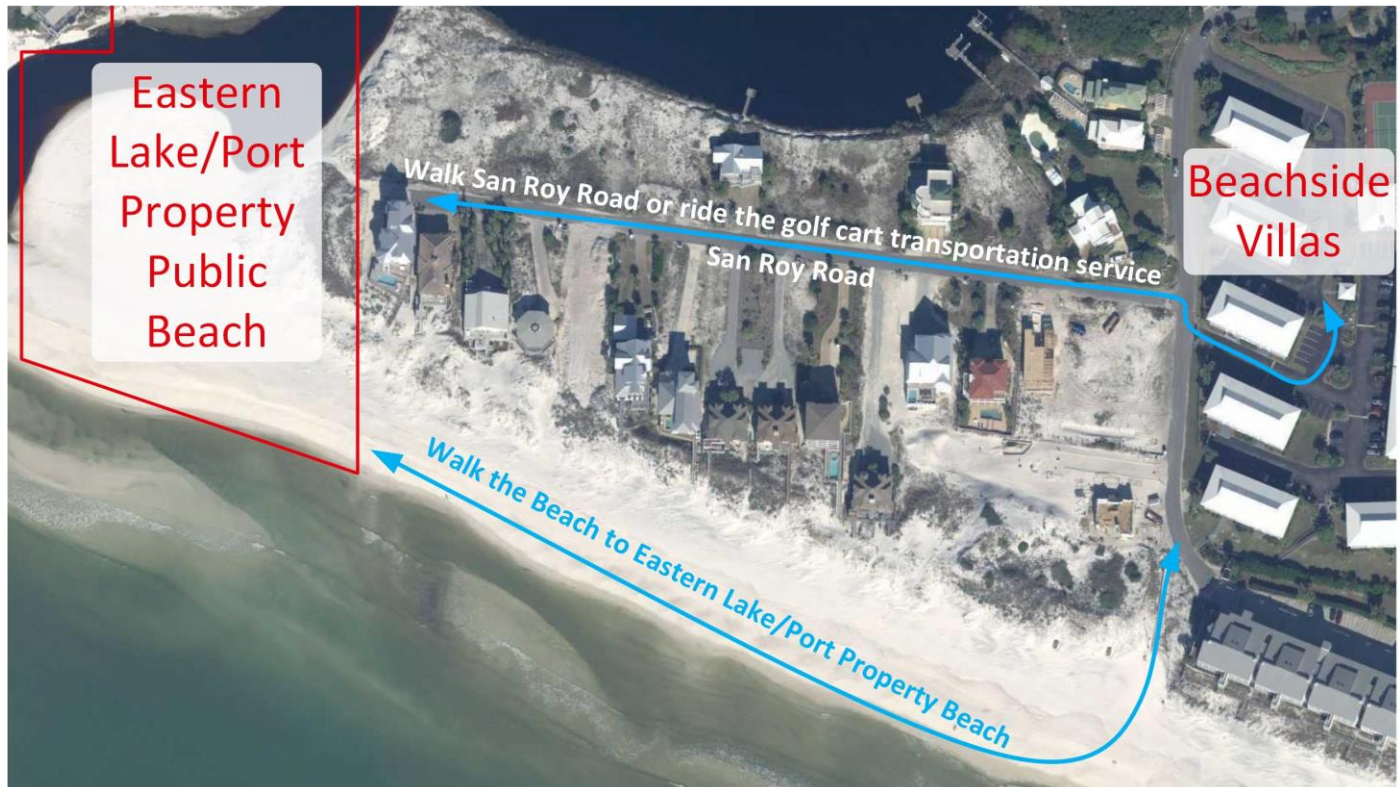
- Eastern Lake Public Beach at the end of San Roy Road
- Sugar Dunes Beach at the Sugar Dunes Boardwalk near Building 6
- Walton Dunes Public Beach at Beachfront Trail
- Deer Lake State Park

## Eastern Lake Public Beach at Port Property/San Roy Rd

<https://sowal.com/place/port-property-access>

Eastern Lake Public Beach is a Walton County managed beach publicly available for use by all. It is located at the end of San Roy Road (Port Property Access), only 1200 ft from Beachside Villas, merely a 3-4-minute walk. As an added convenience to access this beach, Beachside Villas provides golf cart transportation to/from this beach from Beachside Villas. Additional details on beach transportation are below. The Eastern Lake Public Beach borders over 425 feet of Eastern Lake and over 450 feet of the Gulf providing plenty of water choices for adults and children alike. The actual beach area itself (at over 3-acres) sits within almost 6-acres of public land providing both plenty of room and recreational options. There is ample room on Eastern Lake Public Beach to bring your own beach gear. Please see the Walton County Beach Use Rules below for details on beach equipment. Please note that you may not park cars or golf carts at the end of San Roy Road, which are subject to immediate towing. See the picture below for the route to Eastern Lake Public Beach.

Eastern Lake Public Beach was recently procured by Walton County. Walton County has indicated they will not select a beach chair vendor for Eastern Lake Public Beach for 2023.



# Sugar Dunes Beach

<https://sowal.com/place/sugar-dunes-access>.

Sugar Dunes Beach is steps to the beach from Beachside Villas near Building 6 and is accessible via a boardwalk built by Walton County. The Sugar Dunes Beach is primarily private beach, but Florida Law allows the public to access the “wet sand” and the ocean. This means it is completely fine to enter using this boardwalk to walk the beach at the water's edge and of course swim. The beach becomes private at the dry sand.

# Walton Dunes Public Beach at Beachfront Trail

<https://sowal.com/place/walton-dunes-access>

Walton Dunes is a Walton County managed public beach, available for use by all. It is only ¼ of a mile walk from Beachside Villas if you enter at the Sugar Dunes boardwalk and walk east on the beach (left turn off the boardwalk), which is about the same distance as the Eastern Lake Public Beach. The route via neighborhood roads to Walton Dunes is a bit longer than other options but is still readily accessible at about ¾ of a mile. There is public parking and bike racks near Walton Dunes Public Beach if you prefer to drive or ride your bike.

# Deer Lake State Park

<https://sowal.com/photos/deer-lake-state-park>

Deer Lake is east of Walton Dunes and is only ½ of a mile from the Sugar Dunes Boardwalk by walking the beach, or just ¼ mile past Walton Dunes. Deer Lake is a large state park with extensive public beach. Deer Lake State Park has been recently updated with new facilities including the addition of a paved park access road with pay station, parking, picnic shelters, restrooms and connections to utilities. The beach is also accessible by walking from Walton Dunes to the Deer Lake State Park Beach.

# Beachside Villas Area Beaches Access Map



# Beach Access Transportation

Although multiple beaches are within minutes of walking distance, Beachside Villas also provides transportation to/from Eastern Lake Public Beach via golf cart service from 9:00am to 5:00pm every day of the week, from March-15<sup>th</sup> through September-14<sup>th</sup>. The service is almost continuous with the Beachside Villas Trolley post used as the standard pickup/drop off point on Beachside Villas property. As an added service, direct pickup and drop off at your building can be requested by calling or texting the phone number provided on the golf cart itself.

# Beach Chair and Umbrella Rentals

Eastern Lake Public Beach was recently procured by Walton County. Walton County has indicated they will not select a beach chair vendor for Eastern Lake Public Beach in 2023. There is ample room on Eastern Lake Public Beach to bring your own beach gear. Please see the Walton County Beach Use Rules below for details on beach equipment.

# Walton County Beach Use Rules

- Leave No Trace - Items left on the beach overnight will be discarded
- Policy on Tents/Square Canopies - Tents/square canopies up to 10'x10' are allowed and must be set up on the top 1/3 of the beach. Tents larger than 10'x10' are not allowed.
- Please allow a 15' setback from dunes and from the water's edge for emergency vehicles
- No glass containers are permitted on the beach
- No charcoal grills are permitted on the beach, propane grills may be permitted if 225 sq. inches (approximately 16" x 20") or smaller.
- Removal of sand, water or vegetation is strictly prohibited
- Keep off the dunes

# Walton County Permits

- Vehicles and dog permit information
  - To learn about vehicle or dog permits, visit <https://www.co.walton.fl.us/896/Beach-Driving-Charter-Fishing-Dog-Beach>
- Bonfire permit information
  - Learn more about beach bonfires visit <https://www.swfd.org/beach-safety/beach-bonfires>.
  - To obtain a beach bonfire permit, visit <https://www.swfd.org/beach-safety/bonfire-permit-request>. Permits are \$50.00 and bonfire setups run \$400.00-\$600.00.

# Walton County Water Safety

Stay Safe - Obey all beach flag warnings

- Double red flag – Water closed to the public
- Red flag – High hazard. High surf and/or strong currents
- Yellow flag – Medium hazard. Moderate surf and/or currents
- Green flag – Low hazard. Calm conditions. Exercise caution.
- Purple flag – Dangerous marine life.
- NOTE: Absence of flags does not assure safe waters.

